

CONNECTED  
AND CAPABLE



**ThinkCentre** M625q Thin Client



**Lenovo**™

# ThinkCentre M625q Thin Client



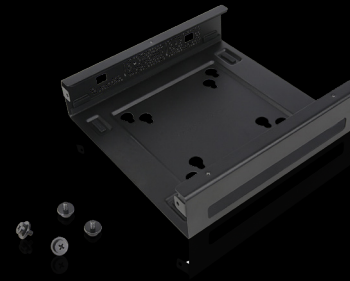
## DESIGNED TO MEET YOUR GROWING BUSINESS REQUIREMENTS

The ThinkCentre M625q Thin Client combines power with energy efficiency. Built with productivity in mind, it's powered by the AMD 7th Gen E2-9000e and is virtualization and Cloud-ready.

- **Performance:** better user experience with up to 50% increase in boot time
- **Responsiveness:** the Thin Client includes the Lenovo Thin Client Manager – an intuitive and intelligent software that allows admins to manage and upgrade devices quickly and easily – all from one place
- **Productivity:** with features that match a full-fledged PC, users can access files, apps, and services through the cloud, giving businesses more freedom and flexibility
- **Fanless:** the ThinkCentre Thin Client features a fanless design that produces absolutely no noise – perfect for a quiet office or dusty environments

## ACCESSORIES

**ThinkVision Tiny-in-One Monitor** ▶  
Pair your Tiny Thin Client with Lenovo's unique ThinkVision TiO monitors to deliver a single, modular, all-in-one Thin Client using a single power outlet with dual display capability.



◀ **ThinkCentre Tiny Vesa Mount II**  
House your Tiny PC in this VESA Mount II for utmost mounting flexibility.

**Lenovo Stereo Headset** ▶  
Headsets with an adjustable headband and boom arm 180° mic.



# ThinkCentre M625q Thin Client

## PERFORMANCE

### Processor

AMD 7th Gen E2-9000e 1.5GHz Dual Core

### Memory

1 DDR4 1866MHz  
Maximum 8GB (4/8)

### Storage

Choice of 32GB or 128GB SSD

### Power Supply

65W 88% Adapter

## GRAPHICS

### GPU

AMD Radeon R2 Integrated

### Resolutions

Single Display 3840x2160 @60Hz  
Extended Modes:

#### Display 1

3840x2160 @60Hz  
3840x2160 @30Hz  
2560x1440 @60Hz  
1920x1080 @60Hz

#### Display 2

1920x1080 @60Hz  
3840x2160 @30Hz  
3840x2160 @30Hz  
3840x2160 @60Hz

## CONNECTIVITY

### Front Ports

2 x USB 3.0 (1 for Fast Charge)  
2 x Audio (1 Combo)

### Rear Ports

1 x USB 3.0  
3 x USB 2.0  
DP + DP  
1 x LAN  
Punch-out 1: USB-C\* or VGA\*\* or Serial  
Punch-out 2: Serial

\* USB-C Supports data transfer only

\*\* If VGA port is installed second display port is disabled.

### Expansion Slot

1 x M.2 for PCIe /SATASSD  
1 x M.2 2230 for WiFi

### WiFi

2x2 AC/Bluetooth WiFi Adapter (Optional)

## DESIGN

### Form Factor

1L Tiny4

### Security

HW TPM2.0

### KB Power on

Yes

### MIL-SPEC

Yes

### Fanless design

Yes

## GREEN CERTIFICATIONS

Energy Star 6.1  
EPEAT® Gold  
UL Green Guard®

## INTEGRATED SOFTWARE SUPPORT

### WES7 & Win10-IoT

Citrix XenApp and XenDesktop  
VMware Horizon View (Blast & PCoIP)  
Microsoft RDS  
Internet Explorer  
Windows Connection Manager  
Windows Hotkey Passthrough Tool

### LeTOS

Citrix XenApp and XenDesktop  
VMware Horizon View (Blast & PCoIP)  
Microsoft RDS via RDesktop

Microsoft RDS via FreeRDP

Parallels 2X

REXEC

SSH

VNC

X11

Firefox

Chrome

Fabulatech USB Redirection

Fabulatech for Scanners

## SECURITY SUPPORT

Imprivata

## MANAGEMENT SOFTWARE

Lenovo Terminal Manager

license included free of cost

## SOFTWARE CERTIFICATIONS

### Citrix

Citrix HDX Ready  
HDX Premium  
HDX 3D Pro



### VMware

VMware Horizon Certified



## RECOMMENDED SERVICES

### Accidental Damage Protection (ADP)

Prevents the hassle of unexpected repair costs. Provides coverage for non-warranted damage incurred under normal operating conditions, such as minor spills, drops, or damage to the integrated screen.

### Warranty Extension (2 to 5 years total duration)

This fixed-term, fixed-cost service helps you accurately budget for PC expenses, protect your valuable investment, and lower the cost of ownership over time.



© 2018 Lenovo. All rights reserved. These products are available while supplies last. Prices shown are subject to change without notice. For any questions concerning price, please contact your Lenovo Account Executive. Lenovo is not responsible for photographic or typographic errors. Warranty: For a copy of applicable warranties, write to: Warranty Information, 500 Park Offices Drive, RTP, NC 27709, Attn: Dept. ZPYA/B600. Lenovo makes no representation or warranty regarding third-party products or services. Trademarks: Lenovo, the Lenovo logo, Rescue and Recovery, ThinkPad, ThinkCentre, ThinkStation, ThinkVantage, and ThinkVision are trademarks or registered trademarks of Lenovo. Microsoft, Windows, and Vista are registered trademarks of Microsoft Corporation. AMD, the AMD Arrow logo, and combinations thereof are trademarks of Advanced Micro Devices, Inc. in the United States and/or other jurisdictions. Other company, product, and service names may be trademarks or service marks of others.

Lenovo™