



Vehicle Mount Terminals

MFT12SE

TECHNICAL DATA

Housing:	Aluminium, powder-coated
Resilience:	Shock and Vibration according to EN60068-2 Part -6, -27
Protection:	IP65
Operating temp.:	-30 °C to 45 °C/-22 °F to 113 °F
Storage temp.:	-30 °C to 70 °C/-22 °F to 158 °F
Rel. humidity:	5 % to 95 % (in operation), non-condensing
Dimensions:	308 x 268 x 63 mm (W x H x D; without accessories)
Weight:	Approx. 3.6 kg (without accessories)
Power supply:	9 to 72 V DC (electrically isolated)
Power consumption:	Approx. 19 W (as standard), max. 70 W (freezer use)

Display:	12.1" color TFT display XGA with LED backlight, 1024 x 768 pixels, 500 cd/m ² , 2 status LEDs
Touchscreen:	Resistive, minimum surface hardness of 3H, with robust, chemically hardened beaming glass
Keyboard:	Virtual on-screen keyboard, 5 freely programmable function keys
Graphics:	Integrated graphics unit, DirectX12 support
Processor:	Intel Atom* QuadCore up to 4x 1.83 GHz (x5-E3940, Apollo Lake)
Memory:	64 GB flash, 4 GB RAM (DDR3L), 8 GB RAM (DDR3L) optional, 128 GB flash optional
Operating system:	Windows®** 10 IoT Enterprise, IGEL OS
BIOS:	UEFI BIOS, update-capable, bootable from LAN or USB as standard
Interfaces:	Ethernet 100-BaseT/10-BaseT autoswitch, RS232, 1x USB 3.0, 3x USB 2.0, integrated speaker in speech output quality, audio/microphone input via jack plugs

TECHNICAL DATA



Special features:

- Integrated energy buffer for short-term bridging of power breakdowns
- 2 integrated antennae
- Fan-less design
- Device start-up and shutdown via freely definable function keys (ATX function) and via ignition
- Sunlight readable

Options:

- WLAN IEEE 802.11a/b/g/n/ac/x/k/v/r (2.4 GHz/5 GHz) incl. BT-compatible close-range network WLAN Security¹: WPA, IEEE802.11i (Personal and Enterprise), WPA2, WPA2-PSK
802.1x: PEAP-MSCHAPv2, PEAP-GTC, PEAP-TLS, EAP-TLS, EAP-TTLS, EAP-FAST, LEAP
- SOTI[®] MobiControl
- Integrated battery for up to 1.5 hours of operation

* Registered trademark - Intel Atom

** Registered trademark - Microsoft

¹ Standard codification validated by ACD.
Subject to technical modifications.

OPTIONS & ACCESSORIES



Power pack MFT1x



Voltage Supply Cable (3 wired)



MFT10/MFT12 Mounting kit flat Standard



MFT10 Mounting kit RAM Mount



MFT12/MFT15 Mounting kit RAM Mount



MFT1x Mounting kit RAM Mount with holding clip



MFT10/MFT12 Mounting kit flat Quick Change System



MFT10 Mounting kit RAM Mount Quick Change System



MFT12/MFT15 Mounting kit RAM Mount Quick Change System



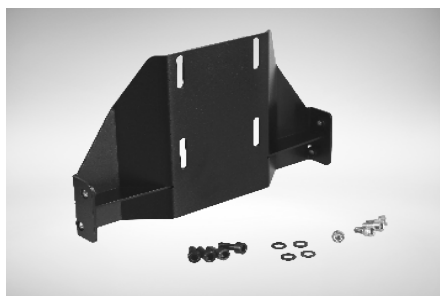
Quick Change System Power Supply Cable (3 wired)



Quick Change System Adapter (3 wired)



MFT1x Adapter bracket



MFT1x Mounting kit Adapter bracket



MFT1x Keyboard Mounting Device – without keyboard



ML Keyboard black

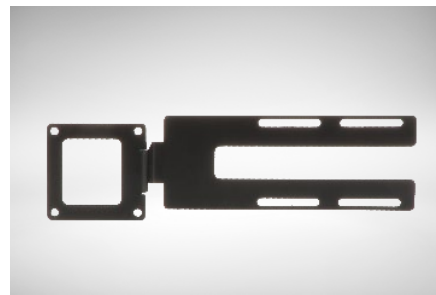
OPTIONS & ACCESSORIES



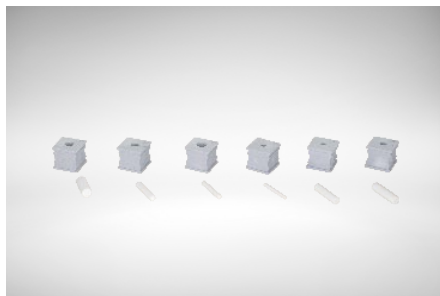
MFT1x sideward Keyboard with USB-Hub



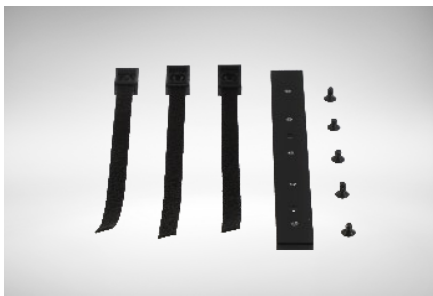
MFT1x sideward Keyboard without USB-Hub



Mounting Kit for MFT1x sideward Keyboard



Spout Set for interface cable



MFT1x strain relief



ACD EasyToPush Set - Radio Button Black & USB Gateway



ACD EasyToPush - USB Gateway



ACD EasyToPush - Radio Button Black



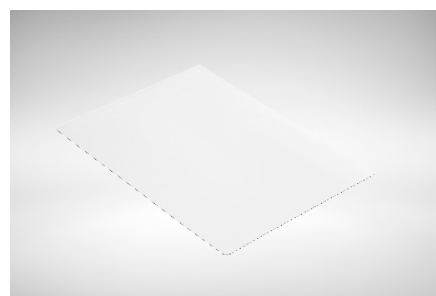
ACD EasyToPush - Radio Button Blue



ACD EasyToPush - Radio Button Green



ACD EasyToPush - Radio Button Yellow



MFT10 screen protector for resistive touch screen

Configure your equipment directly in the online configurator at:
<https://www.acd-gruppe.de/en/vehicle-terminal-configurator/>
 Our sales department will also be happy to help you with the selection under the telephone number +49 7392 708-499