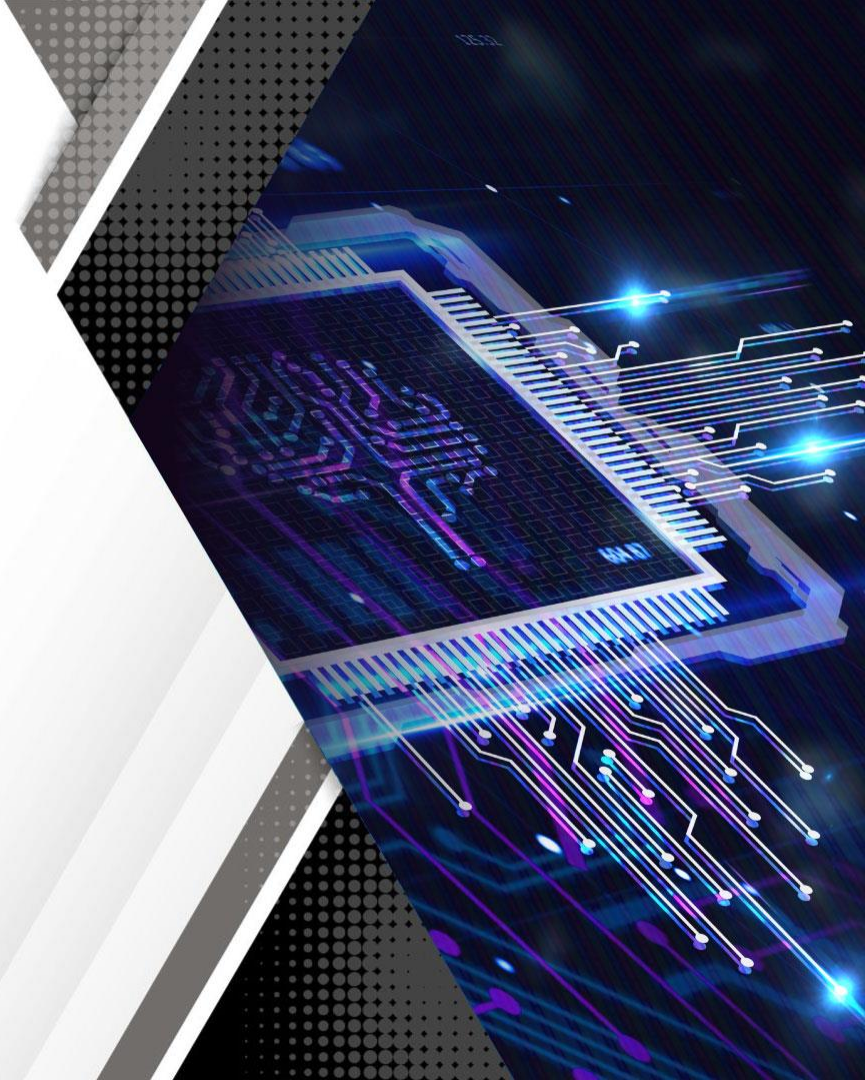


**ALTOS**  
an Acer Group Company

# ALTOS Thin Client

T420 F1, T430, T420, T415



Type	Specification
CPU	<ul style="list-style-type: none"> <li>Intel® Celeron® Processor N5105 (Quad Core 2.0GHz)</li> </ul>
Memory	<ul style="list-style-type: none"> <li>4GB(SO-DIMM DDR4), Up to 16GB</li> </ul>
Storage	<ul style="list-style-type: none"> <li>mSATA 64GB, Up to 1TB (m.2 Optional)</li> </ul>
Display Port	<ul style="list-style-type: none"> <li>Type: 1 xType-C, 2 x DP</li> <li>Resolution: 4096 x 2160 @60Hz</li> </ul>
Audio	<ul style="list-style-type: none"> <li>1 x Line-out</li> <li>1 x Mic-in</li> </ul>
Front I/O ports	<ul style="list-style-type: none"> <li>1 x Power button</li> <li>1 x Mic-in</li> <li>1 x Line-out</li> <li>1 x USB 3.0</li> </ul>
Rear I/O ports	<ul style="list-style-type: none"> <li>1 x Antenna reserved</li> <li>3 x USB 2.0</li> <li>1 x GbE LAN (RJ-45) port</li> <li>1 x DC 12V input</li> <li>1 x USB 3.0</li> <li>2 x DP</li> <li>1 x Type C</li> </ul>
Lan	<ul style="list-style-type: none"> <li>1 Gigabit Ethernet (10/100/1000Mbps), RJ-45</li> </ul>
Management & Security	<p>Management</p> <ul style="list-style-type: none"> <li>IGEL UMS</li> </ul> <p>System Security</p> <ul style="list-style-type: none"> <li>Standard Kensington anti-theft keyhole</li> <li>TPM Module</li> </ul>
Cooling	Fan-less Convection

Type	Specification
Mounting	<ul style="list-style-type: none"> <li>Vertical standing feet</li> <li>VESA mounting bracket</li> </ul>
Form Factor	<p>Dimension</p> <ul style="list-style-type: none"> <li>131mm x 31.5mm x 167mm (stand excluded)</li> <li>131mm x 76mm x 178mm (stand included)</li> </ul>
Protocols	<ul style="list-style-type: none"> <li>Citrix receiver</li> <li>Microsoft RDP Client</li> <li>VMware View Client</li> </ul>
OS Support	<ul style="list-style-type: none"> <li>IGEL READY</li> </ul>
Power Supply	Adapter: Worldwide auto-sensing 100-240V AC, 50/60 Hz, 12V/3A DC (Consumption: Less than 10W)
Weight	0.55 kg

## Altos T420 F1 Thin Client





## Security & Safety

Could connect with AD account, set up multiple password (power-on password, log-in password and APP start password).

## Energy Efficient & Cost Saving

- Compared with Windows OS, IGEL OS CPU usage can reduce 40-70%
- Energy efficient can increase 22%~49%
- The power requirement is only one third of PC.

## Excellent User Experience

- The built-in multimedia decoding suite ensures smooth audio-visual and online meetings.

## High Compatibility

- Supports a wide range of VDI protocols (Citrix / VMware / RDP / AVD / AWS) (X session/ No Machine / VNC /SSH)
- High compatibility of peripheral equipment (e.g. card reader, barcode scanner etcetera.)

## Easy Management

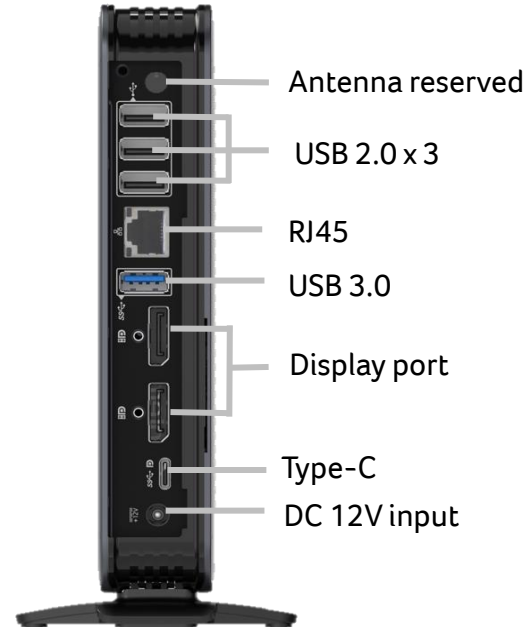
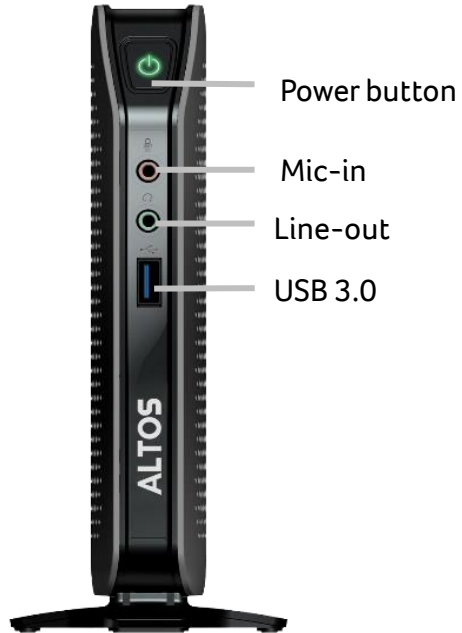
- UMS (Universal Management Suite)/ICG (IGEL Cloud Gateway) can manage IGEL endpoint computers for home office and remote office
- Support customized software embedding (Custom Partition), which can execute software in local entities (e.g. VPN, Teams, Zoom, Webex)

# Altos T420 F1 Thin Client Image

**ALTOS**  
an Acer Group Company



# Altos T420 F1 Thin Client Overview



Type	Specification
CPU	<ul style="list-style-type: none"> <li>Intel® Celeron® Processor J4125 (Quad Core 2.0Ghz)</li> </ul>
Memory	<ul style="list-style-type: none"> <li>4GB(SO-DIMM DDR4), Up to 16GB</li> </ul>
Storage	<ul style="list-style-type: none"> <li>mSATA 64GB, Up to 256GB (m.2 optional)</li> </ul>
Display Port	<ul style="list-style-type: none"> <li>Type: 1 x HDMI, 1 x DP</li> <li>Resolution: 3840 x 2160</li> </ul>
Audio	<ul style="list-style-type: none"> <li>1 x Line-out</li> <li>1 x Mic-in</li> <li>Internal Speaker (Optional)</li> </ul>
Front I/O ports	<ul style="list-style-type: none"> <li>1 x Power button</li> <li>1 x Mic-in</li> <li>1 x Line-out</li> <li>1 x USB 3.0</li> </ul>
Rear I/O ports	<ul style="list-style-type: none"> <li>4 x USB 2.0</li> <li>1 x GbE LAN (RJ-45) port</li> <li>1 x DC 12V input</li> <li>1 x USB 3.0 (1)</li> <li>1 x DP</li> <li>1 x HDMI</li> </ul>
Lan	<ul style="list-style-type: none"> <li>1 Gigabit Ethernet (10/100/1000Mbps), RJ-45</li> <li>1 x M.2 Wi-Fi module (Optional) (1)</li> </ul>
Management & Security	<p>Management</p> <ul style="list-style-type: none"> <li>IGEL UMS</li> </ul> <p>System Security</p> <ul style="list-style-type: none"> <li>Standard Kensington anti-theft keyhole</li> <li>TPM Module</li> </ul>
Cooling	Fan-less Convection

Type	Specification
Mounting	<ul style="list-style-type: none"> <li>Vertical standing feet</li> <li>VESA mounting bracket</li> </ul>
Form Factor	<p>Dimension</p> <ul style="list-style-type: none"> <li>131mm x 31.5mm x 167mm (stand excluded)</li> <li>131mm x 76mm x 178mm (stand included)</li> </ul>
Protocols	<ul style="list-style-type: none"> <li>Citrix CIA/HDX</li> <li>Microsoft RDP Client</li> <li>VMware Web Mail</li> </ul>
OS Support	<ul style="list-style-type: none"> <li>IGEL READY</li> </ul>
Power Supply	Adapter: Worldwide auto-sensing 100-240V AC, 50/60 Hz, 12V/3A DC (Consumption: Less than 10W)
Weight	0.55 kg

(1) The rear USB 3.0 port will be used for optional wireless to support WiFi antenna.

## Altos T430 Thin Client



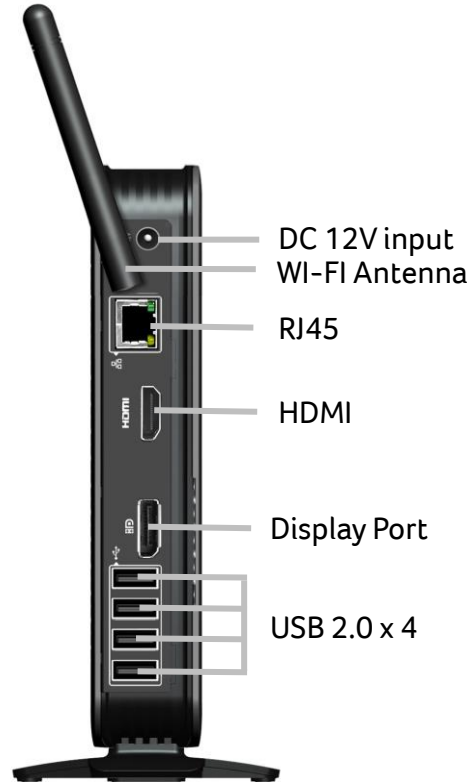
# Altos T430 Thin Client Image



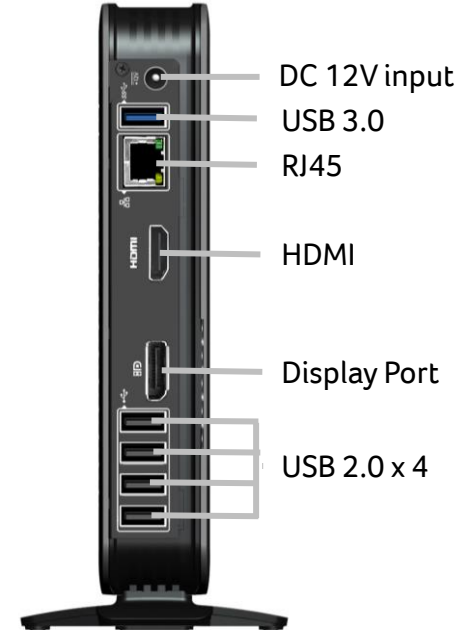
**ALTOS**  
an Acer Group Company



# T430 Thin Client Overview



With WIFI



Without WIFI



Type	Specification
CPU	<ul style="list-style-type: none"> <li>Intel® Celeron® Processor J1900 (Quad Core 2.0Ghz)</li> <li>Intel® Celeron® Processor J1800 (Quad Core 2.41Ghz)</li> </ul>
Memory	<ul style="list-style-type: none"> <li>2GB(SO-DIMM DDR3), Up to 8GB</li> </ul>
Storage	<ul style="list-style-type: none"> <li>mSATA: 8GB ~ 128GB</li> </ul>
Display Port	<ul style="list-style-type: none"> <li>DP x 1 (2560 x 1600@ 60Hz)</li> <li>DVI-I x 1 (1920 x 1200@ 60Hz) (1)</li> </ul>
Audio	<ul style="list-style-type: none"> <li>1 x Line-out</li> <li>1 x Mic-in</li> <li>1 x USB 3.0</li> </ul>
Front I/O ports	<ul style="list-style-type: none"> <li>1 x Power button</li> <li>1 x Mic-in</li> <li>1 x Line-out</li> <li>1 x USB 3.0</li> </ul>
Rear I/O ports	<ul style="list-style-type: none"> <li>5 x USB 2.0 (2)</li> <li>1 x GbE LAN (RJ-45) port</li> <li>1 x DC 12V input</li> <li>1 x DVI-I</li> <li>1 x DP</li> </ul>
Lan	<ul style="list-style-type: none"> <li>1 Gigabit Ethernet (10/100/1000Mbps), RJ-45</li> <li>1 x Wi-Fi module (Optional) (2)</li> </ul>
Management & Security	<p>Management</p> <ul style="list-style-type: none"> <li>IGEL UMS</li> </ul> <p>System Security</p> <ul style="list-style-type: none"> <li>Standard Kensington anti-theft keyhole</li> </ul>
Cooling	Fan-less Convection

Type	Specification
Mounting	<ul style="list-style-type: none"> <li>Vertical standing feet</li> <li>VESA mounting bracket</li> </ul>
Form Factor	<p>Dimension</p> <ul style="list-style-type: none"> <li>131mm x 31.5mm x 167mm (stand excluded)</li> <li>131mm x 76mm x 178mm (stand included)</li> </ul>
Protocols	<ul style="list-style-type: none"> <li>Citrix</li> <li>Microsoft RDP Client</li> <li>Vmware Web Mail</li> </ul>
OS Support	<ul style="list-style-type: none"> <li>IGEL READY</li> </ul>
Power Supply	Adapter: Worldwide auto-sensing 100–240V AC, 50/60 Hz, 12V/3A DC (Consumption: Less than 10W)
Weight	0.55 kg
	<p>(1) DVI to VGA adapter included</p> <p>(2) To support WiFi antenna, USB 2.0 ports at rear will become 4 ports</p>

## Altos T420 Thin Client



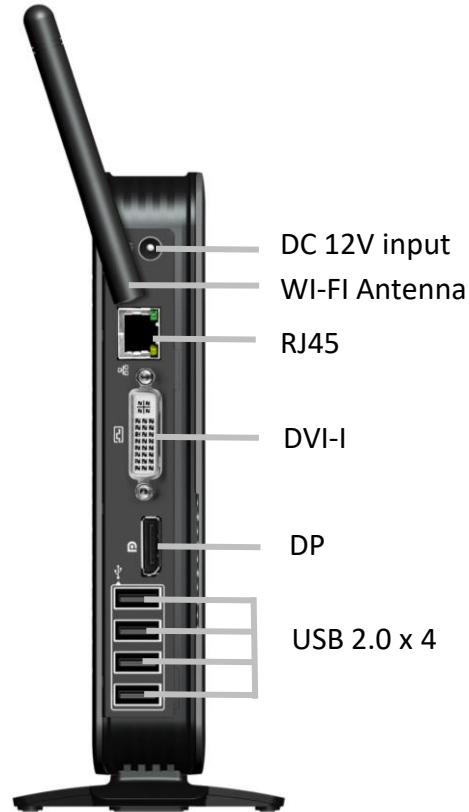
# Altos T420 Thin Client Image



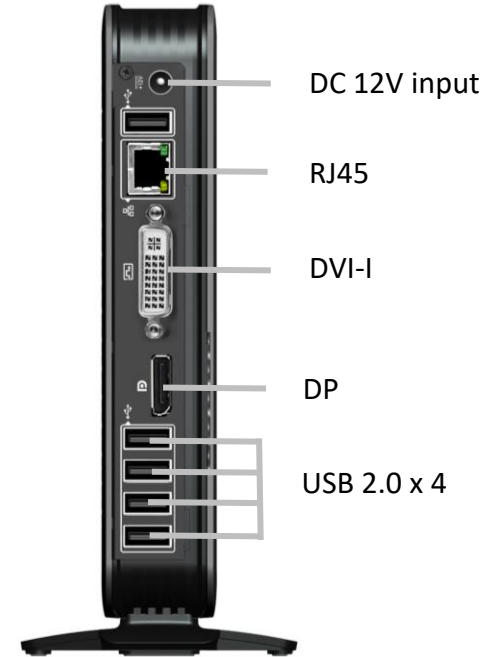
**ALTOS**  
an Acer Group Company



# Altos T420 Thin Client Overview



With WIFI



Without WIFI

# Altos Thin Client Series

# ALTOS

an Acer Group Company

Model	T415	T420	T430	T420 F1
Software Support			vmware READY END-USER COMPUTING	vmware READY END-USER COMPUTING
Operation System		Ready	Ready	Ready
Management	IGEL UMS			
Virtual Component -Citrix, Vmware	Supported			
RDP Module				
Hardware Parameter	AMD	intel	intel	intel
CPU	AMD GX218GL Dual-Core 1.8GHz	Intel J1900 Quad-Core 2.0GHz	Intel 10th Celeron J4125 Quad-Core 2.0GHz	Intel 11th Celeron N5105 Quad-Core 2.0GHz
Memory(DDR3)	2GB ~ 8GB DDR3	2GB ~ 8GB DDR3L	4GB ~ 16GB DDR4	4GB ~ 16 GB DDR4
Storage	mSATA: 8GB ~ 128GB M.2 optional	mSATA: 8GB ~ 128GB	mSATA: 64GB ~ 256GB M.2 optional	m.2: 64GB ~ 1T
Display Resolution	1920 x 1080@60Hz (DVI) 3840 x 2160@60Hz (DP)	1920x1200 (DVI) 2560x1600 (DP)	3840 x 2160@60Hz (DP, HDMI)	4096 x 2304 @60Hz (DP) 4096 x 2304 @60Hz (Type-C)
Power Adapter	12V/3A			
Consumption	< 10w			
I/O Interface				
USB	USB2.0x 5 (No Wifi), or x 4 (With Wifi) USB3.0 x 1	USB2.0x 5 (No Wifi), or x 4 (With Wifi) USB3.0 x 1	USB2.0 x 4 USB3.0x 2 (No Wifi), or x 1 (With Wifi)	USB2.0 x 3 USB3.0 x 2
Display Port	DVI-I x 1 DP x 1	DVI-I x 1 DP x 1	HDMI x 1 DP x 1	DP x 2 Type-C x 1
Network Port	1 ( 10x100x1000Mbps )			
Audio (Mic-in, Line-out)	1 Mic-in · 1 line-out			
WIFI	Optional Mini PCI-E wireless	Optional Mini PCI-E wireless	Optional M.2 port wireless, and can not use M.2 SSD	



Designed for your  
computing needs

Altos Thin Client



Efficient performance for multitasking

Altos Thin Client

A satellite view of Earth at night, showing city lights and the curvature of the planet. A glowing blue network of nodes and lines is overlaid on the image, suggesting a global network or data flow. The text "THE BEST IS YET TO COME" is centered in white, bold, sans-serif font.

**THE BEST IS YET TO COME**