

Lenovo
ThinkCentre

The lean, mean, cloud-based machine

Lenovo ThinkCentre neo 50q ThinClient datasheet
1 Liter (1L) Tiny form factor desktop

Version 1.0 | July 2023



 **next-gen**
EDGE OS
for cloud workspaces



 **vxl software**



Powered by up to
12th Gen Intel® Core™ i3 processor

Smarter
technology
for all

Lenovo

Essential performance in a compact package

Businesses are steadily adopting cloud-based computing. It makes sense for lean businesses and startups that aim to build capital and manage their expenses more efficiently. Lenovo ThinkCentre neo 50q ThinClient is the solution. Armed with a host of cloud-based applications and a robust processor, the ThinClient is designed to lighten the burden on business overheads and IT departments. ThinkCentre neo 50q ThinClient features a **Linux-based IGEL OS**, which makes endpoint management easy and provides built-in enterprise-grade security while giving users a familiar, trouble-free workspace. The choice of **Windows 10 IoT Enterprise OS** available on this device provides a platform for powerful, robust, ThinClient computing. **LeTOS™ V2**-powered ThinClient is efficient and flexible-with enhanced functionality and hardened security.

Incredible ease of use

Streamlined productivity: being a cloud-based system doesn't mean sacrificing productivity. ThinkCentre neo 50q ThinClient features an up to **12th Gen Intel® Core™ i3 U-Series mobile processor**, capable of handling heavy workloads. **Up to 32GB DDR4** memory keeps the system speedy and responsive. **Up to 256GB SSD storage** handles the few locally stored files and applications.

Cloud-based performance: working on the cloud has numerous advantages – **cloud-based ThinClient** is secure, convenient to set up, versatile, and incredibly cost-effective. It is perfect for remote work and can easily be configured to fit any business needs. This device is also easy to maintain, requiring minimal local IT intervention. The other upside is that the chances of data loss are greatly minimized, thanks to cloud-based storage. ThinClient has **robust encrypted network solutions** requiring zero configuration, easing deployment, and speeding up setup.

Endlessly versatile: ThinkCentre neo 50q ThinClient is an incredibly versatile device, capable of handling any purpose it is turned to. Thanks to cloud-based applications, it can be re-purposed for everything from data science and accounting work to design and much more. Additionally, the ports available to the ThinClient lend it additional versatility for connecting displays, peripherals, and data storage and transfers. The **BTB punch-out port¹** allows adding an extra VGA, COM, or DisplayPort.



Why buy ThinkCentre neo 50q Gen 4 ThinClient

Space-saving: ThinkCentre neo 50q ThinClient is a robust device with a **Tiny form factor**. Its 1-liter size makes it lightweight and small enough to fit snugly into any space available without taking up too much real estate.

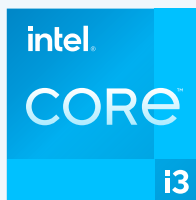
Cost-effective: ThinkCentre neo 50q ThinClient is an incredibly cost-effective device – it minimizes overheads, and its lean structure ensures that it is highly affordable and **perfect for startups and lean enterprises with minimal IT support**. As a cloud-based device, everything is centralized elsewhere, from data to IT support delivered remotely.

Flexible: modern businesses are highly flexible in terms of work and how they meet their goals. This agility is precisely what they need from their systems as well. ThinkCentre neo 50q ThinClient is that device. As a cloud-based device, it is easy to tailor to specific requirements like graphic design, data analysis, coding, web-based or app-based work, and much more. **Specific pre-installed apps** ensure it is geared perfectly to its purpose, without unwanted software bloating the device.

Eco-friendly: ThinkCentre neo 50q ThinClient is an incredibly eco-friendly device made with responsibly-sourced materials and a series of green certifications. It is made of **85% of post-consumer content (PCC)**, a thermal shell made of **90% Ocean-Bound Plastic (OBP)**, packaged in a **30% OBP bag**, and shipped in a box made of **Forest Stewardship Council (FSC) paper** sources. It also has EPEAT™ Gold,² Energy Star® 8.0,² and TCO 9.0 certifications. It is highly power-efficient and thermally secure with the Intelligent Cooling Engine. It also uses **low-emission manufacturing methods** and **Low VOCs** in its construction.

¹Available on models with 12th Gen Intel® Core™ i3 processor

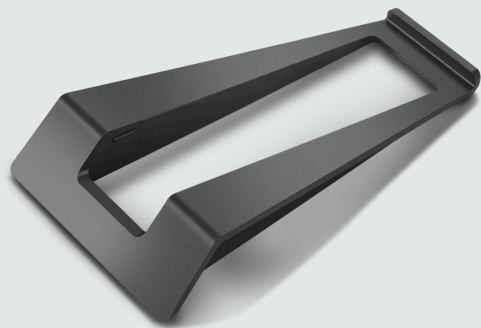
²Optional



Powered by up to
12th Gen Intel® Core™ i3 processor

Essential performance in a compact package

Recommended accessories



Vertical Stand

PN: SM10Z42055

This innovative, elegant stand is designed with a small dip angle in front for ease of use. The Vertical Stand also minimizes vibration and noise while maximizing thermal performance.



ThinkCentre Tiny Power Cage II

PN: 4XHON23158

ThinkCentre Tiny Power Cage II is a mounting solution that provides an efficient and secure Power adapter mounting solution for your Tiny PC.



ThinkCentre Tiny Vesa Mount II

PN: 4XFON03161

The ThinkCentre Tiny VESA Mount II is uniquely designed to house the ThinkCentre neo 50q. This versatile mount device can be used separately or combined with other options for a secure mounting functionality.

Essential performance in a compact package

Performance

Processor

Intel® Celeron® processor
Up to 12th Gen Intel® Core™ i3
U-Series mobile processor

Operating System

Windows 10 IoT Enterprise
Linux-based IGEL
LeTOS™ V2
non-OS

Memory

Up to 32GB DDR4, 2 x SODIMM

Storage

Up to 256GB SSD

Graphics

Integrated Intel® UHD graphics

PSU**

65W/90W adapter

Audio

Single speaker, 1 x 2W

Connectivity

WLAN

Up to Wi-Fi 6
Bluetooth 5.1¹

Front I/O ports

1 x USB 3.2 Gen2
1 x USB 3.2 Gen2 (Type-C)
1 x Combo Audio

Expansion slot

1 x M.2 for PCIe SSD
1 x M.2 for WLAN

Rear I/O ports

1 x HDMI 2.1 TMDS
1 x DisplayPort™ 1.4
2 x USB 2.0
2 x USB 3.2 Gen2
1 x RJ45

Optional rear ports

1 x VGA (Punch out port)²
1 x DisplayPort 1.4 (Punch out port)²
1 x Serial (Punch out port)²

Design

Form factor

1 Liter (1L) Tiny form factor

Dimensions (D x H x W, mm/inches)

140 x 262 x 500mm
5.51 x 10.31 x 19.69 inches

Size unpacked w/stand (Lowest position)

179 x 182.9 x 36.5mm
7.05 x 7.2 x 1.44 inches

Weight packed

5.18kg/11.42lbs.

Weight unpacked

1.11kg/2.45lbs.

Color

Raven Black with Terrazzo
material on front bezel

User Experience

Modern Standby³
Smart Power On
Suspend to RAM mode⁴

Security

Firmware TPM 2.0
Kensington® Security Slot™
Chassis Intrusion Switch
BIOS Security
ThinkShield Security

Software and features

Windows IoT Enterprise features

Microsoft RDS/RDP
Write Filter (UWF)
Windows Hello (Supported)
Remote Desktop Client (MSRDC)
.NET Framework
Windows Media Player
Microsoft Edge

Third party applications

Citrix Workspace
Citrix HDX Media Engine
VMWare Horizon Client
USB for Remote Desktop (Fabula Tech)

Remote management agent

LTM Agent v2.0

Certification

Energy Star® 8.0⁵
EPEAT™ Gold
TCO 9.0
ErP Lot3 and Lot7
RoHS
TÜV Rheinland Low Noise
UL GreenGuard
Low Halogen

¹Bluetooth 5.2 is hardware ready but may run at a lower version due to OS limitations

²Punch out port available on models with 12th Gen Intel® Core™ i3 processor

³Only available in Windows IoT Enterprise

⁴Available on IGEL and LeTOS versions

⁵Not available on LeTOS

**Only one offering listed under the feature is configured on selected models

Recommended Services

Lenovo offers a comprehensive portfolio of services to support and protect your investment—so you can focus on your work, not your IT. Our portfolio of services supports the full lifecycle of your Lenovo IT assets. From initial strategic planning to customized configuration, deployment, support, protection, security, and asset recovery—Lenovo has solutions to help you embrace new workplace technologies.

Premier support

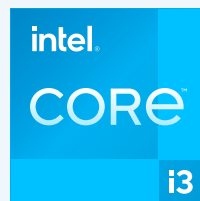
No matter where you or your employees are located, you have direct, 24x7x365 access to elite Lenovo engineers, unscripted troubleshooting, comprehensive hardware, and OEM software support, priority on service delivery, repair parts, and more.

Lenovo Device as a Service

Combine hardware, services, and software into a single, flexible solution to maintain predictable monthly costs. This innovative, fully managed model drives down capital IT expenses while ensuring your employees experience the latest technology to keep them secure and productive.

Warranty extension

Keep your equipment protected with 1-year courier or carry-in service or 1-year limited onsite service. This fixed-term, fixed-cost service helps you accurately budget for desktop expenses, protect your valuable investment, and lower the cost of ownership over time.



Powered by up to
12th Gen Intel® Core™ i3 processor